

TO: ROGER BOSSERT

FROM: BILL HIGINBOTHAM

SUBJECT: ALTERNATE METHOD FOR CENTERING OF THE BEAM TUBE ON THE PRACTICE MAGNET (50 MM, LONG) DCA 310 ONLY.

IN THE ABSENCE OF THE BEADED KAPTON THAT IS TO BE USED IN THE PRODUCTION MAGNETS, THE FOLLOWING PROCEDURE IS SUGGESTED FOR THE PRACTICE MAGNET:

1. OBTAIN APPROX. 130 FT OF:

STK # 1055-8045
POLYETHYLENE TUBING
.125 OD .020 WALL THICKNESS

2. USING A HOT GLUE GUN, APPLY THE TUBING TO THE BEAM TUBE AS SHOWN IN FIG.'S 1 & 2

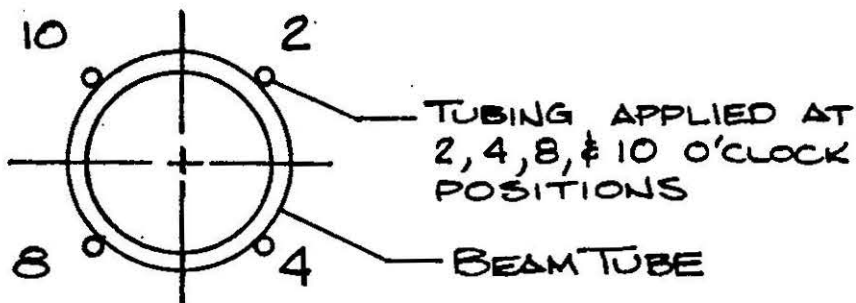
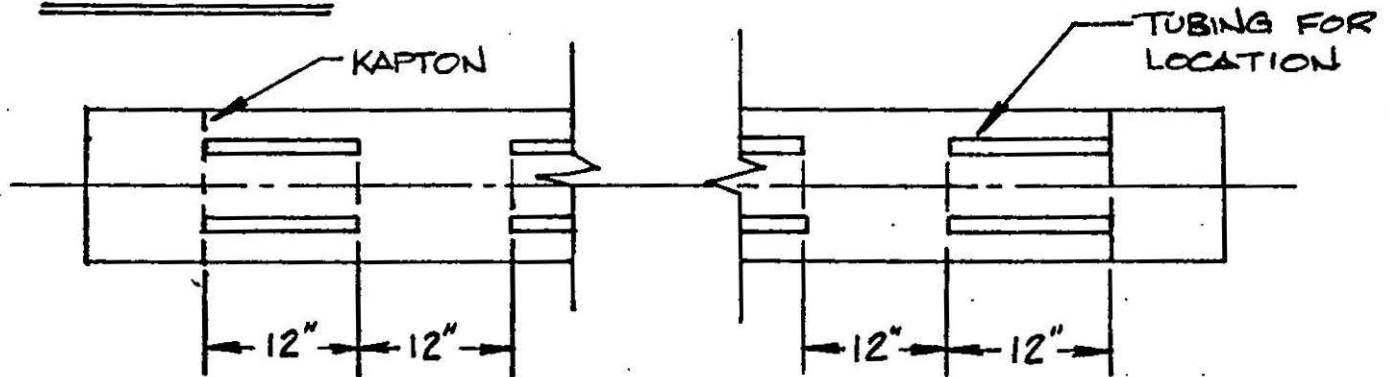


FIGURE 1



- TUBING TO BE APPLIED IN 12 IN. STRIPS EVERY OTHER 12 IN. UNLESS OTHERWISE SPECIFIED.
- START APPLICATION AT THE START OF KAPTON WRAP AND FINISH AT THE END OF THE KAPTON WRAP.

FIGURE 2