

Test Beam Study of SiPM-on-Tile Configurations

**A. Belloni Y.M. Chen A. Dyshkant T. K. Edberg S. Eno J. Freeman M. Krohn ¹ Y. Lai
D. Lincoln S. Los J. Mans G. Reichenbach L. Uplegger S. A. Uzunyan V. Zutshi**

Northern Illinois University

University of Maryland

Fermilab National Accelerator Laboratory

University of Minnesota

ABSTRACT: Light yield and spatial uniformity for a large variety of configurations of scintillator tiles were studied. The light from each scintillator was collected by a Silicon Photomultiplier (SiPM) directly viewing the produced scintillation light (SiPM-on-tile technique). The varied parameters included tile transverse size, tile thickness, tile wrapping material, scintillator composition, and SiPM model. These studies were performed using 120 GeV protons at the Fermilab Test Beam Facility. External tracking allowed the position of each proton penetrating a tile to be measured. The results were compared to a GEANT4 simulation of each configuration of scintillator, wrapping, and SiPM.

KEYWORDS: Calorimeters | scintillators, scintillation and light emission processes | Detector modelling and simulations I | Photon detectors for UV, visible and IR photons (solid-state)

ARXIV EPRINT: [2102.08499](https://arxiv.org/abs/2102.08499)

¹Corresponding author.

Contents

1	Introduction	1
2	Test beam setup	2
3	DAQ setup	3
4	SiPM-on-Tile Concept	3
4.1	Description of tile geometries	4
4.2	SiPMs used for the study	4
5	Simulation	4
6	SiPM calibration	6
7	Scintillator response	7
7.1	Event selection	7
7.2	The light yield determination	7
7.3	Tile uniformity	8
7.4	Light yield as a function of tile area	10
7.5	Light yield as a function of tile thickness	12
7.6	Light yield as a function of hole size in ESR reflective wrapper	14
8	Systematics	16
8.1	Reproducibility of optical coupling	16
8.2	Misalignment of SiPM relative to the tile dimple	17
8.3	SiPM temperature dependence	17
9	Summary	17

1 Introduction

The High Luminosity phase of the Large Hadron Collider (HL-LHC) [1] is scheduled to begin at CERN in 2027, with a designed instantaneous luminosity of $5 \cdot 10^{34} \text{ cm}^{-2} \text{ s}^{-1}$. In order to operate in this environment, a new high granularity calorimeter (HGCal) [2] will be installed in the endcap regions of the CMS detector. In regions of the calorimeter where the fluence is highest, the design uses silicon sensors as the active material. In lower fluence regions, the design uses plastic scintillator tiles, with the scintillation light readout by silicon photomultipliers (SiPMs).

The design of the scintillator section of HGCal is driven by the necessity of calibrating the detector with minimum ionizing particles (MIPs) throughout the lifetime of the calorimeter. To

achieve the required performance, uniform light collection across the face of individual scintillator tiles is important. The SiPM-on-tile technology, where the SiPM is located in a dimple machined into the tile surface, has been studied by the Calorimeter for Linear Collider Experiment collaboration (CALICE) [3–5]. These studies reported that for 97% of a $3 \times 3 \text{ cm}^2$ tile area the light yield response is within 10% of the average response. Similar studies are needed for the tile designs that will be used in the HGCAL. Some adjustment of the HGCAL SiPM-on-tile design may be required to cover the full range of tiles in the calorimeter. CMS HGCAL will use scintillator tiles of approximately square shape varying in size from roughly 2.3×2.3 to $5.5 \times 5.5 \text{ cm}^2$.

We describe the apparatus and analysis used to study the responses of different scintillator tile geometries and materials using the Fermilab Test Beam Facility (FTBF) [6] at the Fermi National Accelerator Laboratory. In this report, we present measurements for various geometries of Eljen Technology EJ-200 [7] and Kuraray SCSN-81 [8] tiles and their comparison with GEANT4 [9–11] based simulations.

2 Test beam setup

The Fermilab Test Beam Facility [6] provides a primary beam containing 120 GeV protons bunched at 53 MHz. The beam is delivered as a slow spill with a 4.2 second duration once per minute and intensity of approximately 5×10^4 protons per spill. The beam spot shape is roughly Gaussian, with standard deviation in x and y of about 1.5 cm (x and y are the horizontal and vertical directions transverse to the beam direction, respectively), to provide the sufficiently even population of protons across our scintillator tiles. We present the analysis of data taken during January-February 2020.

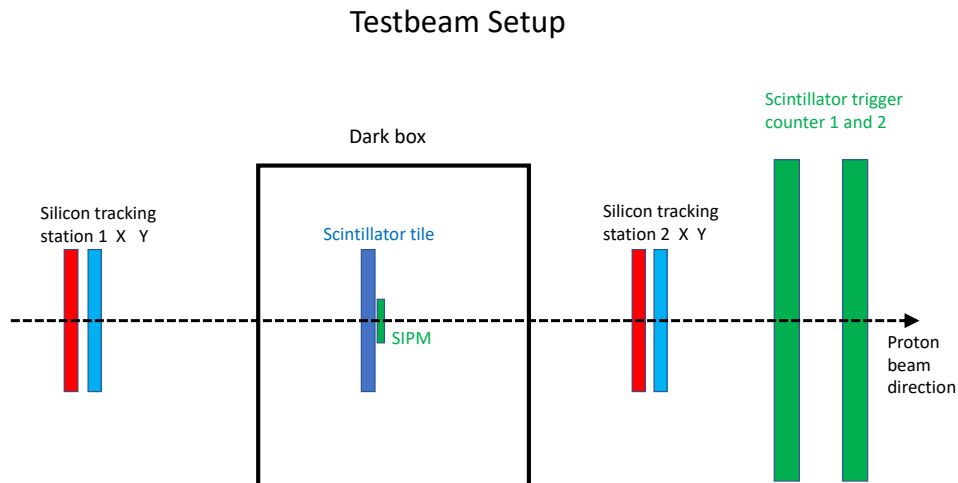


Figure 1. Test beam layout, not to scale. A dark box on a computer-controlled x-y stage contained the SiPM-on-tile sample. Upstream and downstream doublets of silicon strip layers provided particle tracking. Two downstream scintillation counters provided the trigger.

The test beam configuration is shown in Fig 1. The scintillator sample and the readout SiPM were placed in a dark box mounted on a computer-controlled x-y stage that provided the ability to move the tile transversely to the beam. The readout SiPM was connected to a 2 GHz inverting amplifier [12]. Bias voltage for the SiPM was provided by a Keithley 6410 source meter. The analog signal from the SiPM was sent to a DRS4 1 – 5 GS/s waveform digitizer [13]. The firmware of the DRS4 was modified to provide an output "BUSY" signal [14].

Silicon strip tracking stations were placed on the upstream and downstream sides of the dark box containing the scintillator sample to measure the beam particle position. Two orthogonal layers of strips (tracker planes) in each tracking station recorded three-bit amplitude signals for each triggered event. The strips were 60 μ m \times 10.0 cm and with a total of 640 per layer. The total overlap active area was 3.84 \times 3.84 cm².

We used collections of strips with amplitudes above a threshold to find clusters of adjoining strips. Amplitude-weighted coordinates of strips were assigned to these clusters to build particle tracks. Assuming parallel beam propagation, we treated (X, Y) pairs of clusters in the upstream and downstream stations with the minimum transverse distance between them as the most probable track trace. We used the (X, Y) position of the most probable track in the upstream tracker station as the beam particle's measured position (in events with no hits in the downstream tracker station, the first (X, Y) pair of clusters in the upstream station was used).

The coincidence of two scintillator counters provided the trigger for the system. The coincidence was fed into a NIM+ module which is based on the CAPTAN+ board designed at Fermilab and a Kintex7 FPGA. This module was configured to accept triggers that occurred in the absence of BUSY signals from the DRS4 and the silicon readout, so that a single event was readout before a new trigger was sent.

3 DAQ setup

The FTBF Data Acquisition System [15] is called OTSDAQ, "Off The Shelf Data Acquisition." It was designed at Fermilab and is based on the XDAQ libraries developed at CERN for the CMS experiment. OTSDAQ was used to configure the DRS4 board and the silicon strip tracker stations, to provide triggers for both systems, and to perform online data quality monitoring and run control. The digitized waveforms from the DRS4 and the tracker information data streams were collected by the independent DAQ computers. Offline, these streams were combined into events using matching triggers. The operating acquisition rate was about 1K events per beam spill.

4 SiPM-on-Tile Concept

This study investigates prototypes based on the SiPM-on-Tile concept [4]. Scintillators of various sizes were machined with a "dimple" as shown in Fig 2. The dimple provided a physical space for the SiPM and improved uniformity of response. In general, the SiPM will detect more light from a particle passing close to it. To reduce this geometry-induced hot spot, a dimple was machined to reduce the amount of scintillator and hence the amount of light generated near the SiPM. The SiPMs were located at the center of the dimple, with the active face located 0.55 mm into the dimple relative to the tile face. A reflective wrapper surrounded the tile to reflect escaping photons back

into the tile, increasing the light yield. The wrapper covered 100% of the tile area except for a small hole at the dimple to accommodate the SiPM.

4.1 Description of tile geometries

Tiles were prepared from two scintillator materials, 3.8 mm thick SCSN-81 (Kuraray), and 3 mm thick EJ-200 (Eljen Technology). Dimples were machined into a flat face of the tiles. Two different diameters of dimple were used, as shown in Fig 2: The SCSN-81 tiles had a spherical cap dimple with a diameter on the face of 12.7 mm and depth of 1.7 mm, while EJ-200 tiles had a smaller spherical cap dimple of 6.2 mm diameter on the face and depth of 1.6 mm. Tiles of various transverse sizes were prepared, ranging from 2.3 × 2.3 to 5.5 × 5.5 cm².

4.2 SiPMs used for the study

Two SiPMs from Hamamatsu Photonics were tested: S13360-1350PE [16] and S14160-1315PS [17]. These both have an active area 1.3 × 1.3 mm². The S13360-1350 has 50 micron pixels, while the S14160-13115 has 15 micron pixels. The gain of the S13360 is consequently about 10 times larger. To ensure the pulse height of the two SiPMs were approximately the same, a second 10–20 GHz amplifier was employed when studying the S14160.

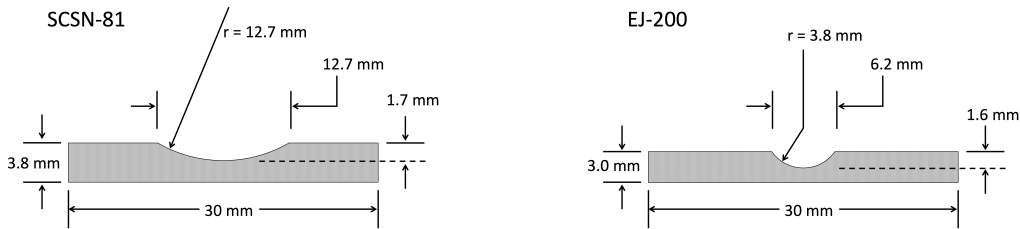


Figure 2. Left: Cross section of "SiPM-on-Tile" SCSN-81 Design. Right: Cross section of EJ-200 tile. The dimples are centered on the tile face.

5 Simulation

The expected optical responses of the various tiles were simulated using the GEANT4 [9–11] toolkit. The results are compared with data in Section 7.

Fig. 3 shows the GEANT4 rendering of the simulation geometry. It is separated into three parts: the tile with its dimple, the reflective wrapping, and the SiPM attached to a backplate. The tile is completely wrapped in a reflective coating except for a hole centered on the dimple. For most simulations, the SiPM back was flush with the tile surface. A circular backplate outside of the wrapping was attached to the back of the surface-mount SiPM and was simulated as either printed

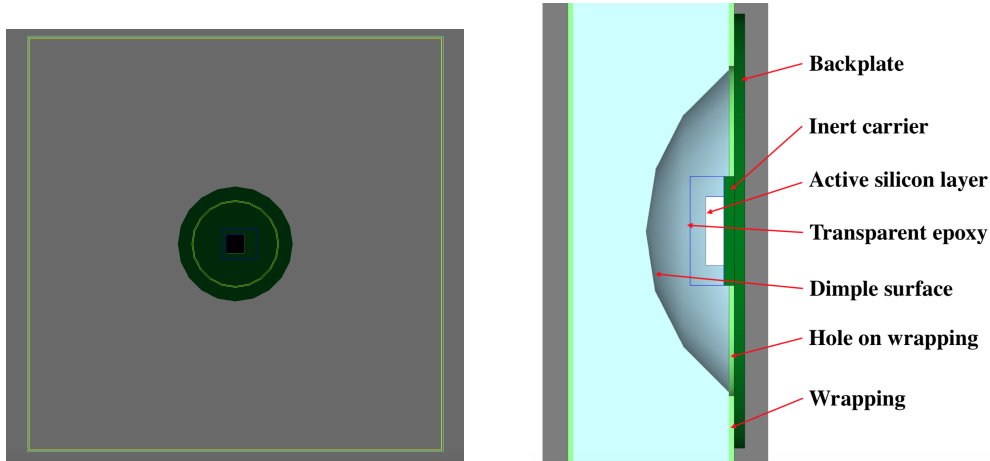


Figure 3. GEANT4-rendering of simulated tile geometry as seen by the beam (left) and side view (right). The tile is a rectangle composed of plastic scintillator with a spherical dimple. The square at the center of the dimple is the rendering of the simulated SiPM. The sizes of this geometry follows Fig. 2 (right).

circuit board white silk screen (WSS) or black tape with reflectivities at a wavelength of 425 nm of 0.68 and 0.05, respectively.

The simulated scintillator material was set to be the base material for SCSN-81 (polystyrene) and EJ-200 (polyvinyltolulene). Its optical properties were taken from the datasheets of the commercial products SCSN-81 [8] and EJ-200 [7] except for the absorption length of EJ-200. The effective light attenuation length at 425 nm was set to 3.8 m for EJ-200. The wavelength dependence of the attenuation length for EJ-200 was determined using a Varian Cary 300 spectrophotometer. Varying the spectral dependence of the attenuation length within measured uncertainties made negligible differences in our simulations. The attenuation length for SCSN-81 was set to be constant, 1.4 m [8].

The SiPM was modeled as a rectangular solid divided into three layers: transparent epoxy, an active silicon layer, and an inert carrier. Its detection efficiency and specification were taken from the Hamamatsu S13360-1350PE [16] and S14160-1315PS [17] product data sheets. Only photons that hit the front face of the SiPM were recorded. The reflectivities of the inert carrier were set to be 0.5.

The tile was modeled to have a perfectly polished surface, where reflection and refraction angles were deterministic. Adding plausible surface imperfections had little effect on our results. Two wrapping materials were simulated, Tyvek[®] and 3M Vikuiti[™] Enhanced Specular Reflector film (ESR) [18] with effective reflectivities set to 0.79 and 0.985 at 425 nm, respectively. A thin air gap between the tile and the wrapping was included.

A 120 GeV proton beam was generated, oriented perpendicular to the scintillator face. The scintillating efficiency was 10 photons/keV for EJ-200 [7] and 8.7 photons/keV for SCSN-81 [8]. A photon entering into the SiPM sensitive area was counted if it passed an acceptance-rejection cut on the SiPM photon detection efficiency curve. The average number of detected photons for each geometry was used as a metric for the simulated light yield.

For each geometry, the simulated proton's impact positions were uniformly distributed across

the tile face. We studied the effect on the light yield of a uniform beam and a Gaussian beam, with a width similar to the test beam, and found the difference to be less than 2%.

When simulations were compared with the data in Section 7, an additional normalization constant was used to scale down the predicted light yield from simulation. It was 1.15 and 1.01 for EJ-200 and SCSN-81, respectively. These quantities took into account the difference between the most probable value (MPV) of light yield from data and the mean light yield from simulation and the estimations of the effective reflectivities that were used for the wrappings.

6 SiPM calibration

The DRS4 digitizes the SiPM analog voltage output using a 14 bit ADC with a configurable sampling frequency. For this experiment, we operated the DRS4 at 1 GS/s. For each trigger the SiPM waveform (as shown for example in Figure 4a) was recorded with 1024 samples. The DRS4 trigger delay was set to provide the pre-signal region of the waveform for the pedestal evaluation. We used integrals of waveform pulses to measure the light output of the scintillator tiles. The waveform pulse was defined as a contiguous set of samples near a local maximum with an ADC amplitude above a threshold of 10 mV. Pulse voltage integrals were calculated as the sums of waveform amplitudes in a region of 60 samples, starting with the sample with a signal above 0.25 of those at a pulse maximum. To obtain the conversion factor between the integrated voltage and the number of the photoelectrons (PEs) produced in the SiPM, the following procedure was applied:

- we collected 10-20K waveforms for a scintillator tile with a known low light output per incident proton in order to see PE peaks;
- for each waveform, we calculated the signal integrated voltage under the pulse with maximum amplitude;
- the pedestal integrated voltage was calculated using a sample region of the signal pulse width in the pre-signal part of the waveform;
- after subtraction of the pedestal, signals were histogrammed to obtain the PE spectrum;
- a fit (the sum of Gaussian curves) of the first six peaks of the spectra was used to calculate the conversion factor as the mean distance between peaks in the fit region.

Figure 4a shows a DRS4 waveform collected from a S14160-1315 SiPM, when a 120 GeV proton passes through a Tyvek[®]-wrapped SCSN-81 scintillator tile. The difference of integrals in regions [562, 622] (signal) and [482, 542] (pedestal) is taken for the signal histogram in this event.

Figure 4b shows a fitted spectrum with individual PE peaks corresponding to a calibration factor of 0.165 ± 0.001. Given the number of pixels in the SiPMs and the photon detection efficiency of the SiPMs at the voltages we operated them, the SiPMs response was linear over the PE ranges studied. Numerous calibration measurements were made throughout the data taking to account for any drift in the calibration factor due to temperature or other external factors.

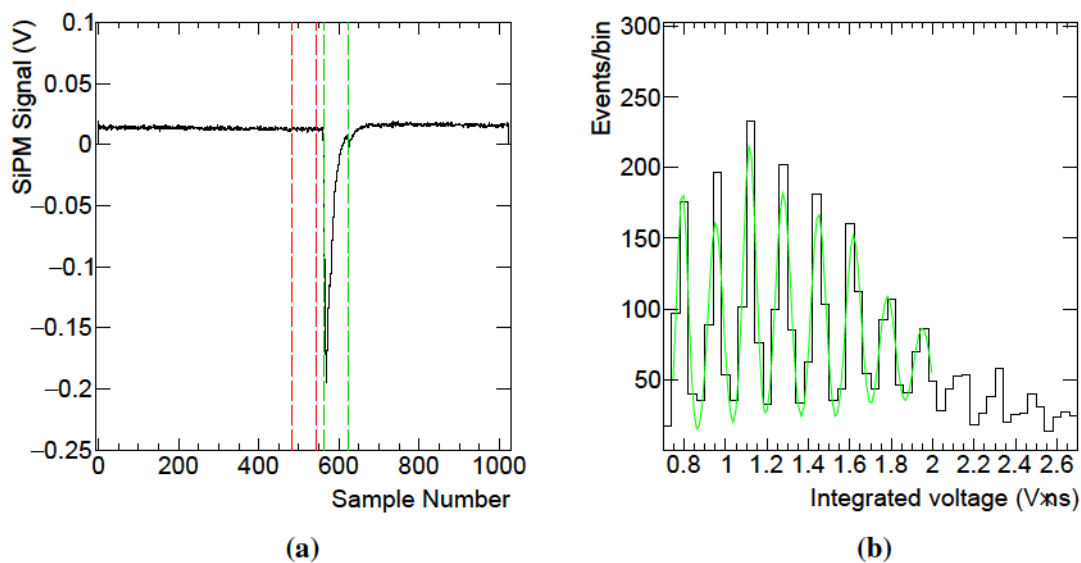


Figure 4. (a) A typical SiPM signal waveform (1 ns per sample) and (b) a photoelectron spectrum with multiple Gaussians fit over the peaks. The signal and pedestal regions of the waveform are integrated in regions [562, 622] (signal, green) and [482, 542] (pedestal, red).

7 Scintillator response

7.1 Event selection

We selected events which 1) have a matching trigger number for both DRS4 and tracker data, and 2) passed quality selection criteria. We required:

- a clean waveform - the falling edge of the signal pulse was required to reach the level of 0.25 of the pulse's maximum and the pre-signal region should be wider than the number of samples used for signal integration;
- noise suppression - SiPM signal pulses were required to have the peak amplitude above ten mV;
- clean tracker data - the upstream tracker station was required to have silicon strips fired in both x and y planes but have not more than one two-strip cluster in each. And the hit in the downstream tracker was required to be within 2 mm of the upstream hit in the direction transverse to the beam.

These cuts were sufficient to ensure that a single particle passed through the tile and that the particle can be treated as a MIP. Light yield distributions for the $3 \times 3 \text{ cm}^2$ SCSN-81 tile wrapped in ESR before and after quality selections are shown in Figure 5a.

7.2 The light yield determination

To determine the light yield of a scintillator tile, the light yield distribution is fit with the sum of a Gaussian and a Landau function, where the lower light yield region is modelled to follow

Gaussian statistics, but the high light yield tail is modelled with a Landau. We report the light yield as the most probable value (MPV) of the fit function. We observed that the MPV statistical uncertainty in a typical single measurement (5-10K clean events) was smaller than the 3% optical coupling systematic uncertainty described below in Sec 8.1. We also note that SiPM optical cross talk corrections to the light yield were not made. The cross talk varied for each type of SiPM and was subsumed in the systematic error quoted. Figure 5b shows the fit of the light yield distribution for clean events in the 3 × 3 cm² SCSN-81 tile test.

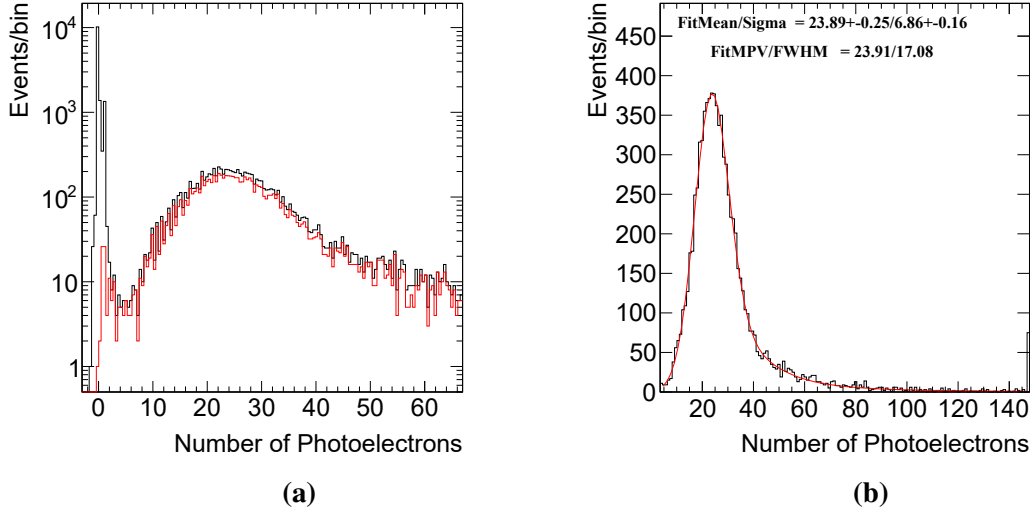


Figure 5. (a) light yield distributions for the 3 × 3 cm² SCSN-81 tile wrapped in ESR before (black) and after quality selections (red), and (b) the fit of the PE yield distribution after quality selections.

7.3 Tile uniformity

An attractive feature of the experimental setup is the capability for studies of the spatial uniformity of the collected signals across the face of a tile. Fig. 6 shows the average light yield distribution for the 3 × 3 × 0.3 cm³ EJ-200 tile wrapped in ESR (reference tile) as a function of the proton impact position. The observed pattern in the light yield, including a bright spot slightly below the dimple region, is consistent with a slightly misaligned SiPM as reported in [20]. Fig. 7 shows profiles of light yield distributions in data and simulation normalized to the maximum value of the entire two dimensional distribution for this EJ-200 tile. The profiles are along 2 mm horizontal and vertical bands that either pass through the tile center or are offset by 8 mm from the tile center in x or y. We observed uniform (within statistical uncertainty) light yield in bands located 8 mm away from the dimple center and 7 mm away from the side edges of the reference tile.

To validate the performance of our experimental equipment, we prepared a SCSN-81 tile with a large dimple machined into it. This configuration was expected to exaggerate the effect of the dimple on the uniformity of the tile response. Figure 8 shows the beam intensity profile and the average light yield distribution as a function of the proton position in the upstream tracker plane for this tile. The depression of the light yield in the tile center is clearly evident and this corresponds to the

dimple in the scintillator material. Fig. 9 shows profiles of light yield distributions, normalized to the maximum value of the intensity profile for this SCSN-81 tile. Points with error bars correspond to profiles of SiPM signals measured in vertical or horizontal bands of 2 mm width, spanning the tile center. Dashed lines show profiles in bands of 2 mm width that are 8 mm offset from the tile center in x or y.

We show in Fig. 10 the average light yield distribution as a function of proton position for a 5.5×5.5 cm² EJ-200 tile. For the same tile, we show the light yield for annular regions centered on the dimple in Fig. 11. We observe an increase of the light yield directly in the region outside the dimple.

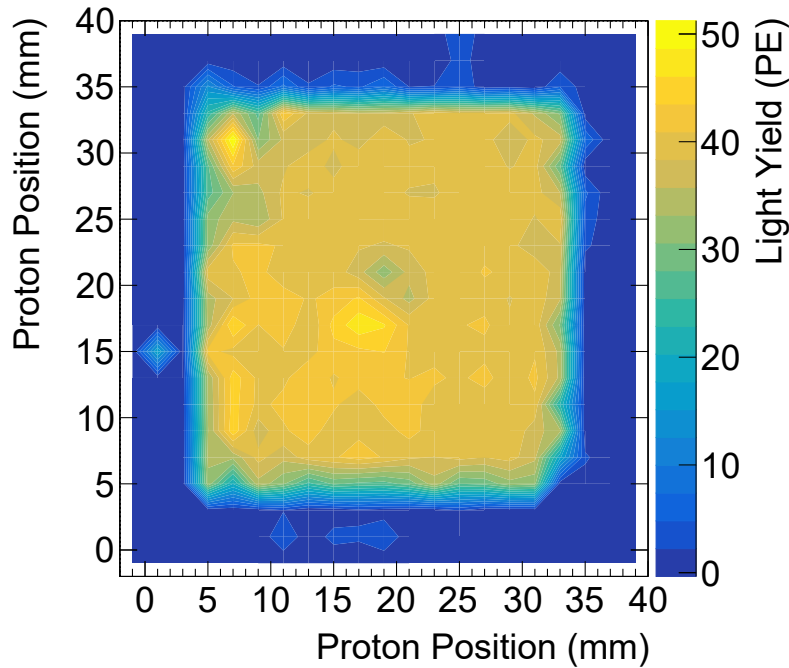


Figure 6. The average light yield distribution of the EJ-200 reference tile as a function of proton position in the upstream tracker.

To quantify a tile’s uniformity, we divided a tile into 2×2 mm² bins, determined the average light yield in each bin, and calculated the RMS mean for all average light yield values in a given tile. The average light yield distributions are shown in Fig. 12 for the 3×3 cm² EJ-200 tile, the 5.5×5.5 cm² EJ-200 tile, and the SCSN-81 tile with large dimple. To establish that the RMS mean distribution provides useful insights on the uniformity of tiles, we performed a simplified simulation of a 3×3 cm² tile. The simulated light response across the tile was perfectly uniform, following a Poisson distribution with an average light yield of 30 PE. We simulated 10 events in each 2×2 mm² bin, the average number of events per bin in data, and compared the result to data by quantifying the non-uniformity as $\frac{\text{RMS}_{\text{mean}_{\text{tile}}}}{\text{RMS}_{\text{mean}_{\text{uniform}}}} - 1$. The non-uniformity of the different sized EJ-200 tiles and the special SCSN-81 tile is listed in Table 1. As expected, the EJ-200 tiles show considerably lower

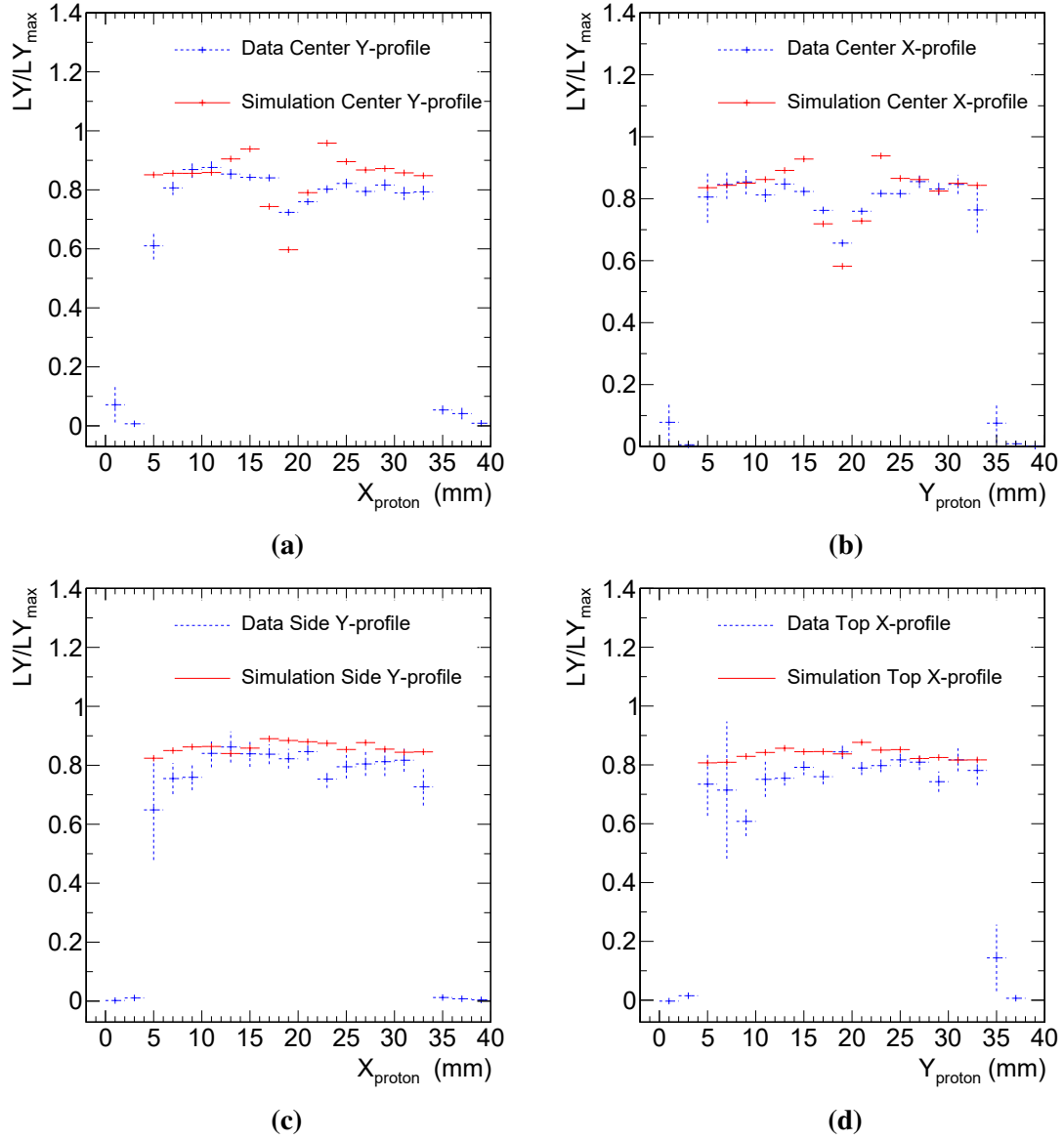


Figure 7. Normalized light yield distribution profiles in data and simulation for the EJ-200 reference tile along a) 2 mm y-bands at the tile center, b) 2 mm x-bands at the tile center, c) 2 mm y-bands offset by 8 mm in the x direction from the tile center, and d) 2 mm x-bands offset by 8 mm in the y direction from the tile center. In the top distributions, the sharp peaks in simulation correspond to the edge of the dimple and this feature does not appear in the data due to the machining of the dimple.

non-uniformity than the special SCSN-81 tile.

7.4 Light yield as a function of tile area

The light yield was measured for different sized square tiles composed of 3 mm thick, EJ-200 scintillator wrapped in ESR. Tile sizes ranged from 2.3×2.3 – 5.5×5.5 cm². The results are compared to simulation and shown in Fig 13. A χ^2 fit to data is performed with the function $Y = Y_0 + Y_1 \sqrt{\text{Tile Area} - 9 \text{ cm}^2}$, where Y_0 and Y_1 are parameters of the fit and fitted values of Y_0

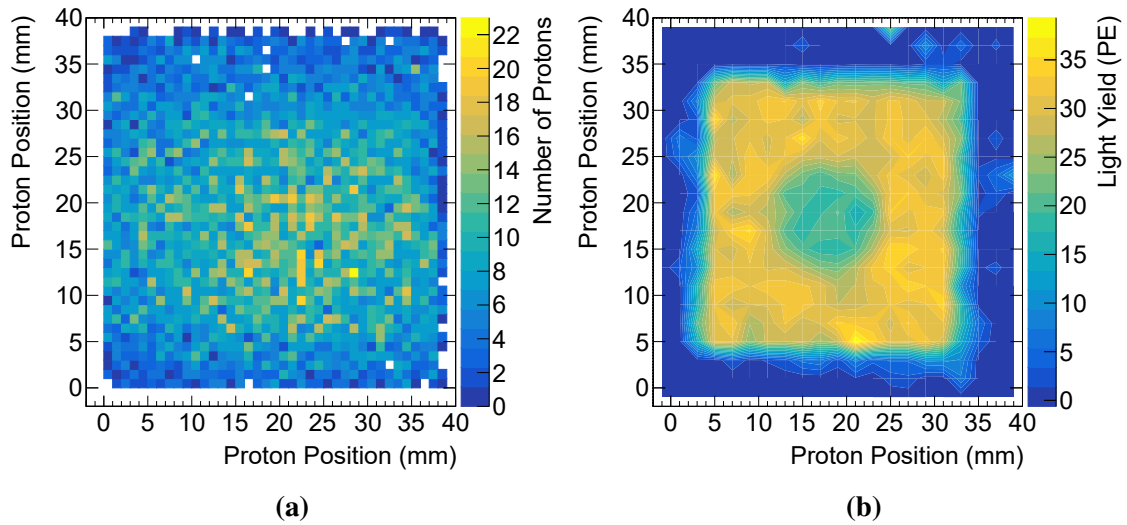


Figure 8. The a) beam intensity and b) average light yield distribution profile as a function of proton position in the upstream tracker. The light yield in b) is that of a SCSN-81 tile with large dimple. The reduced light yield at the dimple is clearly seen.

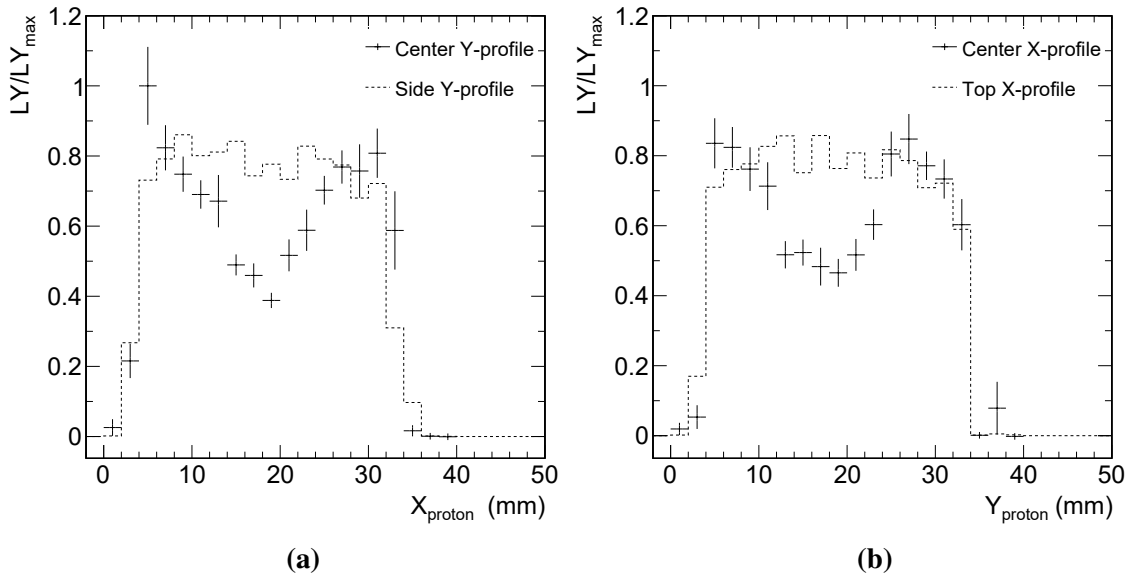


Figure 9. Normalized light yield distribution profiles for the tile with an increased dimple size shown in Figure 8 along a) 2 mm y-bands at the tile center and 8 mm to the right side of the dimple area and b) 2 mm x-bands at the tile center and 8 mm to the top side of the dimple area. Points with error bars correspond to center profiles, while dashed lines show the off-center profiles.

30 16 0 48 PE and $\frac{1}{1} = 0.58 \pm 0.02$ are obtained. The light yield is roughly inversely proportional to the square root of the tile area.

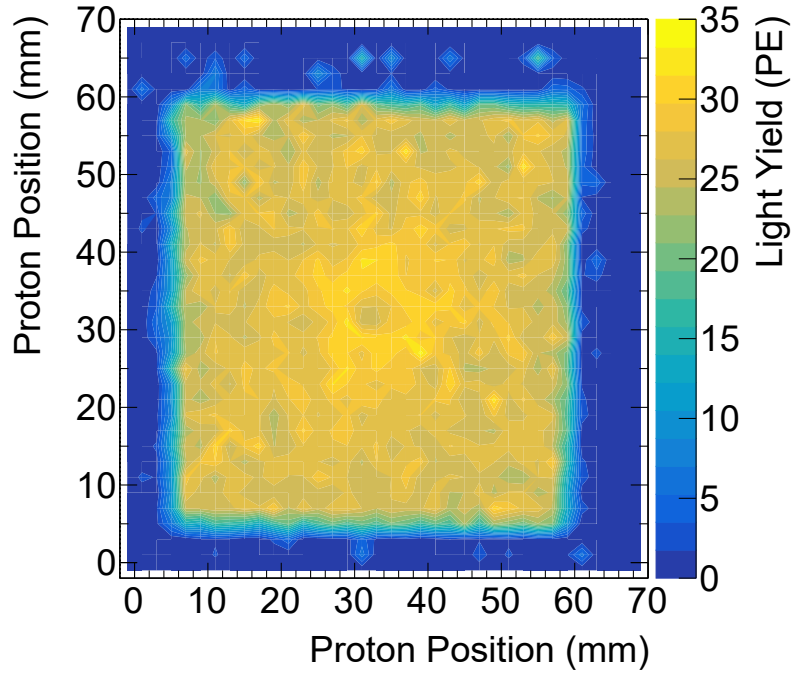


Figure 10. The average light yield distribution profile of the 55 × 55 cm² EJ-200 tile as a function of proton position in the upstream tracker.

Table 1. The non-uniformity, $\frac{\text{RMS}_{\text{mean}_{\text{tile}}}}{\text{RMS}_{\text{mean}_{\text{uniform}}}} - 1$, of the average light yield for the different sized EJ-200 tiles and the SCSN-81 tile with the large dimple machined into it.

Tile	Non-Uniformity
EJ-200 2 3 2 3	0.14 0.03
EJ-200 3 0 3 0	0.39 0.05
EJ-200 3 4 3 4	0.61 0.05
EJ-200 5 5 5 5	0.40 0.04
SCSN-81 3 0 3 0	1.58 0.11

7.5 Light yield as a function of tile thickness

The light yield was measured for tiles of different thicknesses wrapped in either ESR or Tyvek[®]. This was done by stacking 3.8 mm thick, SCSN-81 tiles with a thin layer of Bicorn BC-630 optical grease in between to simulate a solid tile. Care was taken to avoid bubbles in the optical grease coupling. The edges of the tiles were diamond fly-cut to polish them. Sets of three square tiles with dimensions 3 × 3, 4 × 4, and 5 × 5 cm² were prepared. From each set, one tile had a dimple machined in it and the other two tiles had unmachined faces. The results are compared to simulation and shown in Fig 14. The discrepancies between data and simulation are caused by imperfections from the optical grease which were not taken into account in the simulation. A χ^2 fit is performed to the

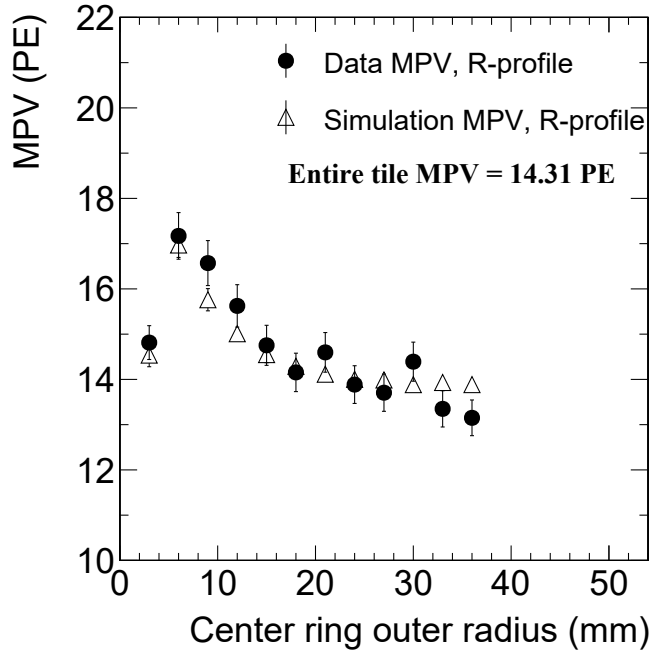


Figure 11. The MPV from concentric annular regions centered at the tile’s dimple (black points) for the 5.5 x 5.5 cm EJ-200 tile. The error bars are $\pm 3\%$ systematic, which dominate the statistical errors in the fits. Simulated results are indicated by open triangles.

light yield measured in data of each tile thickness with the function $y = \theta_0 + \theta_1 \cdot \text{Tile Thickness}^{3/8} \text{ mm}^{-1}$, where θ_0 and θ_1 are parameters of the fit and the fitted values are shown in Table 2. In all cases the increase in light yield was less than linear in tile thickness.

The light yield difference between tiles wrapped with ESR vs. Tyvek[®] is shown in Table 3, where the ratio of MPV from ESR wrapped tiles to Tyvek[®] wrapped tiles for each sample size is listed. In all cases, ESR wrapped tiles demonstrate much higher light yields than tiles wrapped in Tyvek[®].

Table 2. The fit values of θ_0 and θ_1 in the $y = \theta_0 + \theta_1 \cdot \text{Tile Thickness}^{3/8} \text{ mm}^{-1}$ fit to the different sized and wrapped tiles.

SCSN-81 tile area, mm	Wrapping	θ_0 fit values	θ_1 fit values
30.0 x 30.0	ESR	24.03 ± 0.74	0.45 ± 0.04
30.0 x 30.0	Tyvek [®]	7.73 ± 0.22	0.31 ± 0.04
40.0 x 40.0	ESR	14.95 ± 0.44	0.66 ± 0.04
40.0 x 40.0	Tyvek [®]	5.82 ± 0.16	0.34 ± 0.04
50.0 x 50.0	ESR	7.76 ± 0.21	0.76 ± 0.04
50.0 x 50.0	Tyvek [®]	4.49 ± 0.13	0.20 ± 0.04

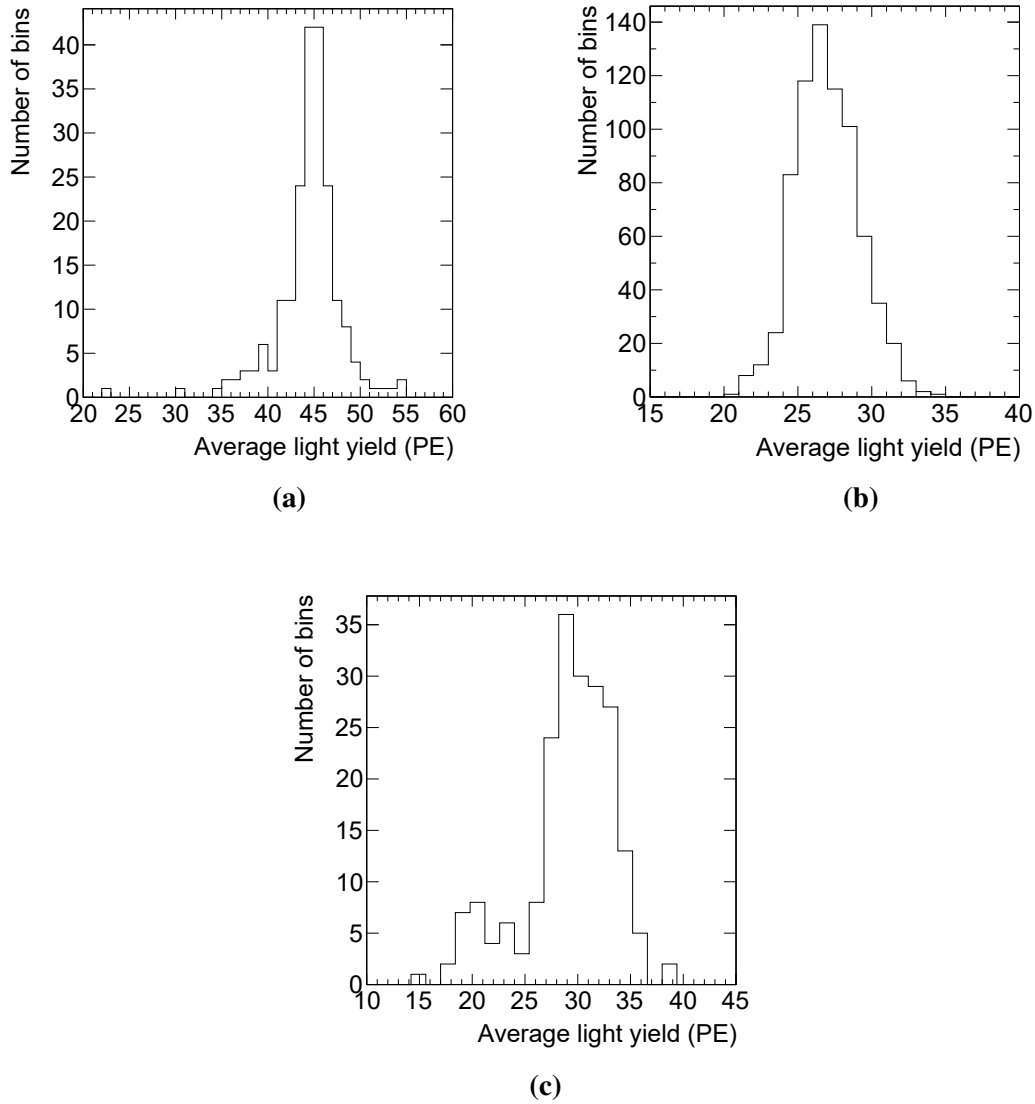


Figure 12. The average light yield in 2x2 mm bins for a) the 3x3 cm² EJ-200 tile, b) the 5x5 cm² EJ-200 tile, c) and the SCSN-81 tile with large dimple.

7.6 Light yield as a function of hole size in ESR reflective wrapper

The light yield as a function of hole size in the ESR reflector was measured for a 3x3 cm² EJ200 tile wrapped in ESR. One expects that as the hole diameter in the reflective foil decreases, the light yield should increase, since fewer photons escape through the gap between SiPM and wrapper. Likewise, it is expected that if the white silkscreen is changed to a non-reflective surface, the light yield should decrease, since fewer photons reflect back into the tile through the gap. The light yield was studied for cases of a white silk screened backplate, and holes in the reflector of 3.2 mm, 5.1 mm, and 6.35 mm diameter. For these hole sizes, the white backplate was compared to data taken with the white backplate covered with black tape, which is a good approximation to a nonreflective surface.

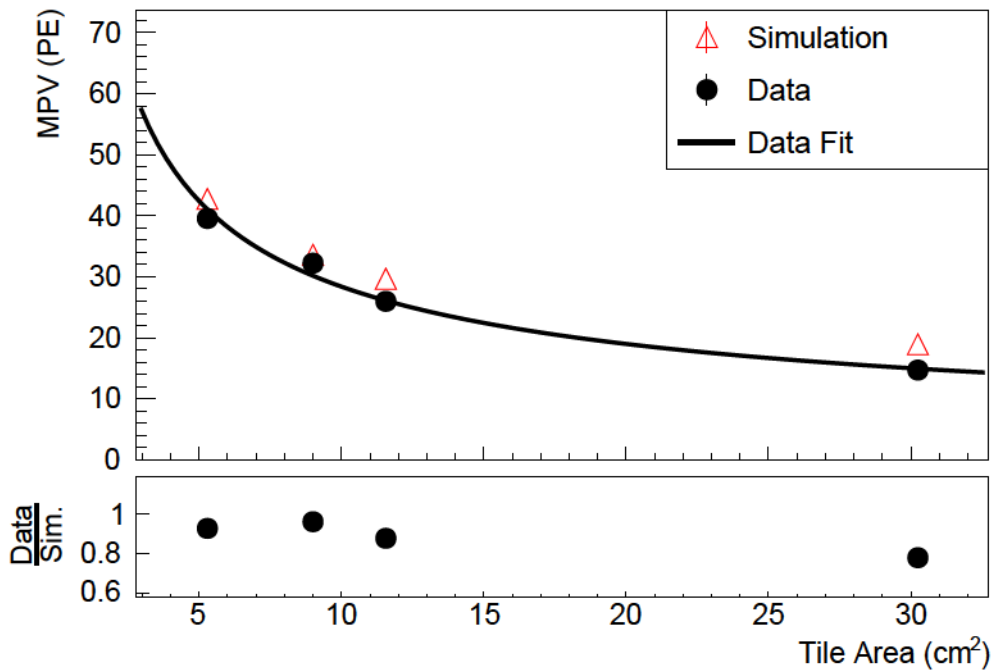


Figure 13. The light yield reported as MPV in data and simulation as a function of tile area for a 3 mm thick, wrapped in ESR, EJ-200 scintillator tile. A systematic uncertainty due to reproducibility of optical coupling is estimated to be 3.0%, and is plotted but smaller than the data points. The black curve is the fit to data.

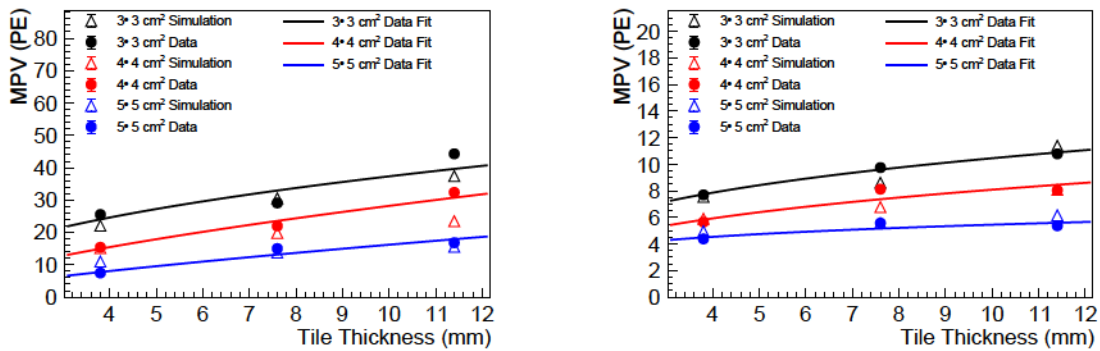


Figure 14. The light yield reported as MPV in data and simulation as a function of tile thickness for 3 × 3, 4 × 4, and 5 × 5 cm² square SCSN-81 tiles, wrapped in ESR (left) or Tyvek[®] (right). The different colored curves are the fits to data.

The results are compared to simulation and shown in Fig. 15. A χ^2 fit to data is performed with the function $p_0 \times (\text{Hole Diameter}/3.2 \text{ mm})^{p_1}$ where p_0 and p_1 are parameters of the fit and fitted values of $p_0 = 36.53 \pm 1.56$ PE and $p_1 = -0.17 \pm 0.06$ for WSS and $p_0 = 16.44 \pm 0.70$ PE and $p_1 = -0.38 \pm 0.06$ for black tape are extracted. In accordance with our expectations, larger holes had lower light yields, and the effect is stronger for the black backplate.

Table 3. The ratio of MPV for ESR divided by Tyvek[®] wrapped tiles.
SCSN-81 tile dimensions, mm ESR/Tyvek[®] light yield MPV ratio

SCSN-81 tile dimensions, mm	ESR/Tyvek [®] light yield MPV ratio
30 0 30 0 3 8	3 32 0 30
30 0 30 0 7 6	2 99 0 27
30 0 30 0 11 4	4 11 0 37
40 0 40 0 3 8	2 72 0 25
40 0 40 0 7 6	2 63 0 24
40 0 40 0 11 4	4 03 0 37
50 0 50 0 3 8	1 71 0 16
50 0 50 0 7 6	2 65 0 24
50 0 50 0 11 4	3 15 0 29

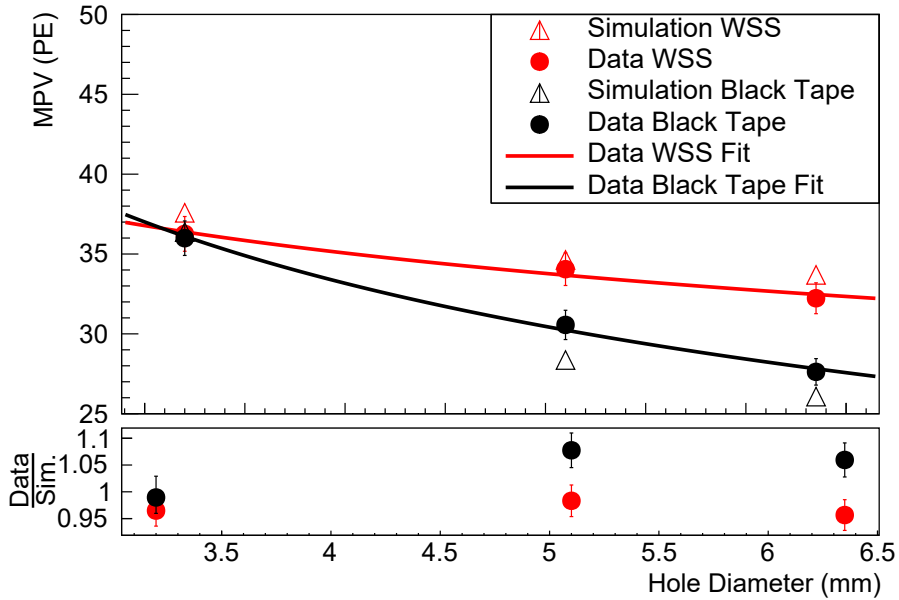


Figure 15. The MPV of the light yields in data and simulation as a function of hole size are shown for SiPMs sitting on top of a white silkscreened backplate and a black tape backplate. (S13360 SiPM, EJ-200 tile.)

8 Systematics

8.1 Reproducibility of optical coupling

A systematic uncertainty was calculated for the reproducibility of the optical coupling between tile and SiPM by comparing the MPV across nominally identical measurements of the same tile with the same wrapping. A typical reproducibility of 3 × 3 cm² tiles was found to be 3%, derived from the root mean square deviation from the mean of six measurements of the same tile.

8.2 Misalignment of SiPM relative to the tile dimple

We studied intentional misalignment of the SiPM relative to its nominal location in the x-y plane, and also in its depth into dimple (z direction). For a SiPM misaligned by 1.7 mm, about four times larger than our alignment uncertainty, in the x-y plane, the difference in the MPV response was found at the level of 2.7%, an effect that was small compared to our overall reproducibility uncertainty. To study the misalignment in the z-direction, we moved the SiPM 1 mm away from the tile and found the MPV decreased by 36.6%. Although this is a significant effect, we believe it is not important for our studies due to the design of the mechanics of our test stand that naturally provided consistent z placement. Additionally, the optical coupling reproducibility measurement, Sec 8.1, includes any residual effect of z misalignment. Our tile-to-SiPM mounting was very reproducible for most tiles.

8.3 SiPM temperature dependence

The temperature of the SiPM was measured using a PT10000 temperature sensor placed on the PCB close to the SiPM. Using this sensor, we observed a temperature variation between 26 and 28 C for all runs. For our SiPMs and our choice of over-voltage, the expected change in the number of detected photons due to temperature variation is less than 1%. The systematic uncertainty in optical coupling covers this uncertainty.

9 Summary

A setup to study the responses of different scintillator tile geometries and materials has been installed at the Fermilab Test Beam Facility. This was used to collect and analyze data in a January-February 2020 test beam run. The light yield and uniformity was measured for various values of the tile size, tile thickness, type of the reflective wrapper, and the hole diameter in the wrapper. ESR was found to be substantially more reflective than Tyvek[®], with a ratio of light yield of roughly 2 to 4 times, depending on other tile parameters. The light yield of a tile was measured as approximately inversely proportional to the square root of the tile area. The light yield was observed to increase much less than linearly with thickness, with the exact amount depending on tile size and wrapping material. Simulation was developed that agrees well with the light yield and uniformity measured in test beam data across the different tiles.

Acknowledgments

Work supported by the Fermi National Accelerator Laboratory, managed and operated by Fermi Research Alliance, LLC under Contract No. DE-AC02-07CH11359 with the U.S. Department of Energy. The U.S. Government retains and the publisher, by accepting the article for publication, acknowledges that the U.S. Government retains a non-exclusive, paid-up, irrevocable, world-wide license to publish or reproduce the published form of this manuscript, or allow others to do so, for U.S. Government purposes. Work also supported by the US-DOE Office of Science (High Energy Physics) under Award Number DE-SC0011845 and DE-SC0010072. Additional support provided by the University of Maryland Physics Department.

References

- [1] Apollinari G. et al., *High-Luminosity Large Hadron Collider (HL-LHC): Technical Design Report V. 0.1*, CERN-2017-007-M (2017), doi:10.23731/CYRM-2017-004.
- [2] CMS Collaboration, *The Phase-2 Upgrade of the CMS Endcap Calorimeter*, CERN-LHC-2017-023, CMS-TDR-019 (2019), <https://cds.cern.ch/record/2293646>.
- [3] Y. Liu et al., *A Design of Scintillator Tiles Read Out by Surface-Mounted SiPMs for a Future Hadron Calorimeter*, in *Proceedings, 21st Symposium on Room-Temperature Semiconductor X-ray and Gamma-ray Detectors (RTSD 2014)*, Seattle, WA, USA, November 8-15, 2014, p. 7431118. 2016. arXiv:1512.05900. doi:10.1109/NSSMIC.2014.7431118.
- [4] G. Blazey et al., *Directly Coupled Tiles as Elements of a Scintillator Calorimeter with MPPC Readout*, *Nucl. Instrum. Meth. A* **605** (2009) 277, doi:10.1016/j.nima.2009.03.253.
- [5] N. Tsuji, *Study on Larger Scintillator Tile for AHCAL*, in CALICE Collaboration Meeting, University of Tokyo, September 2017.
- [6] E. Niner, *Fermilab Test Beam Facility Status and Plans*, 8th Beam Telescopes and Testbeams Workshop, Tbilisi, Georgia, Jan 27-31, 2020.
- [7] Eljen Technology, (January 2016), *General Purpose Plastic Scintillator EJ-200, EJ-204, EJ-208, EJ-212*, eljentechnology, https://eljentechnology.com/images/products/data_sheets/EJ-200_EJ-204_EJ-208_EJ-212.pdf.
- [8] Kuraray, (June 2006), *Scintillation Materials*, PHENIX, https://www.phenix.bnl.gov/WWW/publish/donlynch/RXNP/Safety%20Review%202006_22_06/Kuraray-PSF-Y11.pdf.
- [9] J. Allison et al, *Recent developments in Geant4*, *Nucl. Instrum. Meth. A*, 835: 186 (2016).
- [10] J. Allison et al, *Geant4 Developments and Applications*, *IEEE Trans. Nucl. Sci.*, 53: 270 (2006).
- [11] S. Agostinelli et al, *Geant4—a simulation toolkit*, *Nucl. Instrum. Meth. A*, 506: 250 (2003).
- [12] S. Los, J. Freeman, and S. Atac, *A low cost SIPM evaluation and control prototyping system including accurate bias voltage generation, leakage current measurement, and temperature control using Peltier cooling*, Fermilab-TM-2749-E, 2021.
- [13] Paul Sherrer Insitut, (September 2018), *DRS4 Evaluation Board User's Manual*, PSI, https://www.psi.ch/sites/default/files/2020-02/manual_rev51.pdf
- [14] P. Rubinov, personal communication, 2019.
- [15] K. Biery et al, *The Fermilab Test Beam Facility Data Acquisition System Based on* , 2018, arXiv:1806.07240 [physics.ins-det].
- [16] Hamamatsu, (August 2016), *MPPC S13360 series*, Hamamatsu, https://www.hamamatsu.com/resources/pdf/ssd/s13360_series_kapd1052e.pdf.
- [17] Hamamatsu, (October 2020), *MPPC S14160-1310PS/-1315PS/-3010PS/-3015PS*, Hamamatsu, https://www.hamamatsu.com/resources/pdf/ssd/s14160-1310ps_etc_kapd1070e.pdf.
- [18] Janecek, Martin, *Reflectivity Spectra for Commonly Used Reflectors*, United States: N. p., 2012. Web. doi:10.1109/TNS.2012.2183385.

- [19] M. Tanabashi et al. (Particle Data Group), *Phys. Rev. D* 98, 030001 (2018).
- [20] L.M.S. de Silva and F. Simon, *Effects of misalignment on response uniformity of SiPM-on-tile technology for highly granular calorimeters*, JINST15 P06030, 2020.