



Fermi National Accelerator Laboratory

**FERMILAB-Pub-92/242
E761**

First Observation of Magnetic Moment Precession of Channeled Particles in Bent Crystals

**D. Chen et al
The E761 Collaboration**

*Petersburg Nuclear Physics Institute, Gatchina, Russia
Institute of High Energy Physics, Beijing, PRC
H.H. Wills Physics Laboratory, University of Bristol, UK
Carnegie Mellon University, Pittsburgh, PA 15213
Fermi National Accelerator Laboratory, P.O. Box 500, Batavia, Illinois 60510
University of Iowa, Iowa City, IA 52242
Institute of Theoretical and Experimental Physics, Moscow, Russia
State University of New York at Albany, Albany, NY 12222
Centro Brasileiro de Pesquisas Fisicas, Rio de Janeiro, Brazil
Conselho Nacional de Pesquisas CNPq, Rio de Janeiro, Brazil
Universidade de Sao Paulo, Sao Paulo, Brazil
J.W. Gibbs Laboratory, Yale University, New Haven, CT 06511*

September 1992

Submitted to *Physical Review Letters*

Disclaimer

This report was prepared as an account of work sponsored by an agency of the United States Government. Neither the United States Government nor any agency thereof, nor any of their employees, makes any warranty, express or implied, or assumes any legal liability or responsibility for the accuracy, completeness, or usefulness of any information, apparatus, product, or process disclosed, or represents that its use would not infringe privately owned rights. Reference herein to any specific commercial product, process, or service by trade name, trademark, manufacturer, or otherwise, does not necessarily constitute or imply its endorsement, recommendation, or favoring by the United States Government or any agency thereof. The views and opinions of authors expressed herein do not necessarily state or reflect those of the United States Government or any agency thereof.

First Observation Of Magnetic Moment Precession Of Channeled Particles In Bent Crystals

D. Chen⁸, I. F. Albuquerque^{11,a}, V. V. Baublis¹, N. F. Bondar¹, R. A. Carrigan, Jr.⁵,
P. S. Cooper⁵, Dai Lisheng², A. S. Denisov¹, A. V. Dobrovolsky¹, T. Dubbs⁶,
A. M. F. Endler⁹, C. O. Escobar¹¹, M. Foucher^{12,b}, V. L. Golovtsov¹,
P. A. Goritchev⁷, H. Gottschalk⁵, P. Gouffon^{11,c}, V. T. Grachev¹,
A. V. Khanzadeev¹, M. A. Kubantsev⁷, N. P. Kuropatkin¹, J. Lach⁵,
Lang Pengfei², V. N. Lebedenko⁷, Li Chengze², Li Yunshan², J. R. P. Mahon^{11,c},
E. McCliment⁶, A. Morelos^{5,d}, C. Newsom⁶, M. C. Pommot Maia^{10,e},
V. M. Samsonov¹, V. A. Schegelsky¹, Shi Huanzhang², V. J. Smith³, C. R. Sun⁸,
Tang Fukun², N. K. Terentyev¹, S. Timm⁴, I. I. Tkatch¹, L. N. Uvarov¹,
A. A. Vorobyov¹, Yan Jie², Zhao Wenheng², Zheng Shuchen², Zhong Yuanyuan²

(E761 Collaboration)

September 3, 1992

¹ Petersburg Nuclear Physics Institute, Gatchina, Russia

² Institute of High Energy Physics, Beijing, PRC

³ H.H. Wills Physics Laboratory, University of Bristol, UK

⁴ Carnegie Mellon University, Pittsburgh, PA 15213

⁵ Fermi National Accelerator Laboratory, Batavia, IL 60510

⁶ University of Iowa, Iowa City, IA 52242

⁷ Institute of Theoretical and Experimental Physics, Moscow, Russia

⁸ State University of New York at Albany, Albany, NY 12222

⁹ Centro Brasileiro de Pesquisas Físicas, Rio de Janeiro, Brazil

¹⁰ Conselho Nacional de Pesquisas CNPq, Rio de Janeiro, Brazil

¹¹ Universidade de São Paulo, São Paulo, Brazil

¹² J.W. Gibbs Laboratory, Yale University, New Haven, CT 06511

Abstract

Spin precession of channeled particles in bent crystals has been observed for the first time. Polarized Σ^+ from the Fermilab charged hyperon beam were channeled using two 4.5 cm long bent Si crystals. These crystals provided an effective magnetic field of 45 T which resulted in a measured spin precession of $60 \pm 17^\circ$. This is in agreement with the prediction of $62 \pm 2^\circ$ using the world average of Σ^+ magnetic moment measurements. Using this new technique gives a Σ^+ magnetic moment of $2.40 \pm 0.46 \pm 0.40 \mu_N$ where the quoted uncertainties are statistical and systematic respectively. We see no evidence of depolarization in the channeling process.

PAC numbers:13.40.F, 14.20.K, 14.20.J, 61.80.M

Channeling of high energy particles in bent crystals has been observed in the momentum range¹⁻⁵ of 1.7-800. GeV/c. This technique has already found applications³⁻⁵ in the deflection of high energy beams. Another possibly important application of channeling is the precession of the spin of a polarized particle. This may allow the measurement of magnetic moments in distances of only a few cm. The lifetimes⁶ of baryons containing charm quarks are so short that they travel only a few centimeters even at the highest available accelerator energies. Because of these short lifetimes, classical spin precession techniques using conventional magnets would produce negligibly small spin precession angles.

It was pointed out by Baryshevskii⁷ and Pondrom⁸ that the magnetic moments of particles should precess if they were channeled in a bent crystal. The detailed precession theory has been developed by Lyuboshits⁹ and Kim¹⁰. In a curved crystal the electrostatic field of the atomic planes deflecting the particle transforms into a magnetic field in the particle's rest frame. Thus the spin precession angle, ψ , is⁹

$$\psi = \gamma \omega (g-2)/2 \quad \text{for } \gamma \gg 1 \quad (1)$$

where γ is the Lorentz factor, g is the gyromagnetic ratio, and ω is the deflection angle of the channeled particle. From a measurement of ψ and ω of the channeled particle, we can determine g and hence the particle's magnetic moment

$$\bar{\mu} = [g \cdot e/(2mc)] \cdot \bar{S} \quad (2)$$

where e , m , and \bar{S} are the charge, mass, and spin of the particle, respectively. We expect¹¹ that channeling could be preserved for equivalent magnetic fields up to ≈ 1000 T thus offering the potential of significant precession angles even when the length of the bent crystal is as small as 1 cm.

Modern hyperon beams¹² provide a tool for testing this concept¹³. Using a beam of polarized Σ^+ hyperons, we measured their spin precession in bent Si single crystals. With this result we determine the Σ^+ magnetic moment. The measurements¹⁴ were performed as part of Fermilab experiment E761 which was designed to measure the asymmetry parameter¹⁵ in the decay of polarized $\Sigma^+ \rightarrow p \pi^0$. Fig. 1a shows the relevant parts of the E761 apparatus^{14,15} used in these measurements. The same components were used as in the asymmetry parameter measurement¹⁵ but some of the relative spacings were changed. The apparatus consists of a hyperon spectrometer (one dipole magnet and three clusters of silicon strip detectors) and a baryon spectrometer (two dipole magnets and four clusters of multiwire proportional chambers).

Two bent Si crystals were installed downstream of the hyperon spectrometer at the beginning of the decay region. The major faces of the crystals were cut along their (111) planes, which were oriented in the xz plane (Fig. 1b). Each crystal was $2.50 \times 0.04 \times 4.50$ cm³. The beam was incident on the 2.50×0.04 cm² face. The upper crystal deflected the beam down and the lower crystal deflected the beam up. The deflections were approximately the same. The crystal curvature produced an equivalent magnetic field, B_x , which precessed the spins of the channeled particles in the yz plane. The bending of the two crystals was such that each crystal precessed the channeled particle's spin in opposite directions (Fig. 1b).

Energy loss detectors were implanted along the beam path in each crystal. These measured the energy loss of particles traversing the crystals and helped distinguish channeled particles, which have less energy loss, from non-channeled ones.

As illustrated in Fig. 1, a vertically polarized Σ^+ beam¹⁴ was produced by directing the Fermilab Proton Center extracted 800 GeV/c proton beam onto a Cu target (T). The resulting Σ^+ were produced alternately at a +3.7 or -3.7 mrad horizontal targeting angle relative to the incident proton beam direction. This allowed the polarization direction to be periodically reversed. The mean Σ^+ beam momentum was determined by the hyperon channel geometry (H1) and magnetic field to be 375 GeV/c with a full momentum spread of $\Delta p/p=7\%$. We measured the polarization to be $12\pm 1\%$. At 10 m from the target the beam composition was $\approx 1\%$ Σ^+ , the rest being mostly pions and protons. The vertical beam size (FWHM) at the z position of the crystals was 1.8 cm with a vertical divergence of 1.4 mrad.

Individual beam particles were measured by the hyperon spectrometer to a precision (σ) of 15 μm , 12, and 7 μrad in position, horizontal, and vertical angle respectively at the crystals. Individual track momenta were measured to $\Delta p/p=0.7\%$. In our case only a small fraction, 2.5×10^{-4} , of the beam particles were channeled. This was mainly determined by the ratio of the active area of the crystals to the beam area at the crystals and the probability of the incident particles to be within the Lindhard critical angle¹⁶ ($\approx 10\mu\text{rad}$). The channeling fraction was consistent with expectations².

The total beam flux in the hyperon spectrometer averaged 100 kHz. The small fraction that channeled was enhanced using a scintillation counter trigger. This trigger, whose major components are shown in Fig. 1b,

included beam defining counters in the hyperon spectrometer (not shown), a counter (A) which rejected beam tracks that missed the crystals, and a counter (DF) which rejected undeflected beam tracks. The trigger also required an energy loss signal from a crystal in coincidence with the beam. The trigger rate averaged 200 Hz. The data were collected over a period of 74 hours.

The baryon spectrometer (Fig. 1) measured the downstream track with resolutions (σ) of 0.6%, 20 and 13 μ rad in momentum, horizontal, and vertical angle, respectively. For each event tracks were reconstructed in the spectrometers and the angle between them was computed. Channeled particles were identified by their deflection angle, ω , and by their lower relative energy loss, ΔE , in the crystals. Fig. 2a shows the energy loss spectrum for beam particles which satisfied the trigger requirements. Here ΔE has been normalized to the most probable random energy loss. The lower peak is due to channeled particles. Fig. 2b shows the overall distribution of deflection angles after a channeling energy loss requirement of $0.50 < \Delta E < 0.85$ was imposed. The alignment of the crystal's angle relative to the xz plane was done using a remotely controlled goniometer with a least count 1.8 μ rad. Changes were made so as to maximize the fraction of particles in the low energy portion of the ΔE plot of Fig. 2a. The beam deflection by the crystals (Fig. 2b) was also monitored.

The deflection of the channeled particles was measured to be $\omega = 1.649 \pm 0.043$ and -1.649 ± 0.030 mrad for the up and down bending crystals respectively. For 375 GeV/c Σ^+ this corresponds to an effective magnetic field of $B_x \approx 45$ T in the crystals. The magnetic moment⁶ of the Σ^+ should precess by $\phi \approx 1$ rad in such a field.

The Σ^+ was identified by measuring the vector momenta of the Σ^+ in the hyperon spectrometer and the proton in the baryon spectrometer for the mode responsible for 52% of the decays⁶, $\Sigma^+ \rightarrow p\pi^0$. Events were reconstructed assuming the Σ^+ were channeled and deflected by the full crystal deflection angle, ω , measured for non-decaying particles (Fig. 2b). With this assumption the decay position, z_V , of the Σ^+ as well as Θ , the proton laboratory decay angle relative to the Σ^+ direction, were determined. The precision of the decay position measurement in the 10 m decay region averaged 50 cm. The kinematic variables, Θ and R (the ratio of baryon to hyperon momentum), were important in isolating our signal. Long-lived channeled beam particles and Σ^+ decays through its other major decay mode, $\Sigma^+ \rightarrow n\pi^+$, were eliminated by accepting events only in the regions $0.60 < R < 0.96$ and $0.20 < \Theta < 0.80$ mrad. The geometrical acceptance is almost 100% for decays in the decay region. Non-channeled Σ^+ are eliminated by these cuts. The crystals were at $z=7.6$ m (see Fig. 1). Interactions in the crystals were suppressed by selecting events with fitted vertices in the decay region $8.9 < z_V < 18.9$ m. Fig. 2c shows a mass squared distribution of the missing neutral particle (X^0) for the hypothesis $\Sigma^+ \rightarrow pX^0$ after the above R , Θ , and z_V requirements were imposed. The center and width of the π^0 peak are in agreement with the expected resolution. Only events within 2σ of the π^0 peak were retained. These selection criteria left 2167 ± 47 events in the final sample. The background fraction under the π^0 peak in Fig. 2c is 17%.

The $\Sigma^+ \rightarrow p\pi^0$ decay mode⁶ has a large asymmetry parameter, $\alpha = -0.98$, making it a sensitive analyzer of Σ^+ polarization. In order to control systematic uncertainties¹⁵ in the calculation of polarizations it is necessary to compensate for the differences in acceptance caused by changes in the

beam phase space when the targeting angles are reversed. This is done by dividing the data into bins in beam-angle space in the x direction, calculating the polarization components for each region, and averaging the polarizations for the final result. In the rest frame of the channeled Σ^+ , the angular distribution of the decay protons for the spin up case in bin j is given by

$$dN_j^+ / (N_{oi}^+ d \cos\theta_j) = 1/2 A_{ij} (1 + \alpha P_i^+ \cos\theta_i) \quad (3)$$

where $i=x, y, \text{ and } z$; α is the asymmetry parameter; P_i is the Σ^+ polarization component; N_{oi}^+ is the total number of events; $\cos\theta_{ij}$ is the direction cosine of the proton momentum in the Σ^+ rest frame; and A_{ij} is the acceptance which is a function of the apparatus, beam, trigger, and analysis. A similar distribution was obtained for the spin down case.

We extract the polarization, P_i , by averaging the difference over the sum of the above equation for spin up and spin down data. The measured polarizations are listed in Table 1. For the two crystals the average of the absolute values of the polarization vectors is $P=11.8\pm 3.6\%$, consistent with the value of $12\pm 1\%$ measured¹⁴ without the Σ^+ precession by the crystals.

These polarizations are plotted in Fig. 3. The predicted precessions of the Σ^+ magnetic moments based on previous measurements⁶ are also shown. The measured precession angles for the downbend and upbend crystals are $+51\pm 23^\circ$ and $-72\pm 26^\circ$ respectively. The average of the magnitude of the experimental value of $60\pm 17^\circ$ is consistent with the predicted value of $62\pm 2^\circ$. As anticipated, the spins in the two crystals precess in opposite directions. The Σ^+ spin precesses around the x axis; hence, P_x should be zero. This is in agreement with our measurements (Table 1). Since the

magnitude of the polarization after precession is consistent with the undeflected measurement, there is no evidence of depolarization during channeling. The Σ^+ magnetic moments and their statistical errors derived from the downbend and upbend crystals are $2.15 \pm 0.61 \mu_N$ and $2.74 \pm 0.71 \mu_N$, respectively. Their average of $\mu = 2.40 \pm 0.46 \mu_N$ is consistent with the experimental world average⁶ of $2.42 \pm 0.05 \mu_N$.

Systematic uncertainties in the crystals' bend angles and in the incident hyperon momentum contribute 0.03 and $0.01 \mu_N$ to the uncertainty in our measurement. The major contribution of $0.40 \mu_N$ comes from studies of the stability of our result to reasonable changes in data selection variables (R , Θ , ΔE , MM , and z_V).

This experiment has confirmed spin precession for particles channeled in bent crystals. This phenomena may open the way for magnetic moment measurements of short-lived particles such as charm baryons. A candidate might be the Λ_C which current experiments⁶ have already shown has a large asymmetry parameter and may be produced with significant polarization¹⁷.

We wish to thank the staffs of Fermilab and the Petersburg Nuclear Physics Institute for their assistance. David Daniels made important contributions in the summers he worked with us. This work is supported in part by the U.S. Department of Energy under contracts DE-AC0280ER10587, DE-AC02-76CH0300, DE-AC02-76ER03075, DE-AC0278ER05001, and the Russian Academy of Sciences.

^a Supported by FAPESP, Brazil

^b Present address Department of Physics, University of Maryland,
College Park, MD 20742

c Partially supported by FAPESP and CNPq, Brazil

d Graduate Student from CINVESTAV-IPN, Mexico; partially supported by
CONACyT, Mexico

e Present address Department of Physics, Stanford University,
Stanford, CA, 94309

References

1. A. F. Elishnev et al., Phys. Lett. **B88**, 387 (1979).
2. V. Samsonov, p. 129, Relativistic Channeling, eds. R. A. Carrigan Jr. and J. A. Ellison, Plenum, New York 1987.
3. S. I. Baker et al., Nucl. Instrum. Methods **A248**, 301 (1986).
4. A. A. Asseev et al., Nucl. Instrum. Methods **A309**, 1 (1991).
5. S. P. Moller et al., Phys. Lett. **B256**, 91 (1991).
6. Review Of Particle Properties, Phys. Rev. **D45**, 1 (1992).
7. V. G. Baryshevskii, Pis'ma Zh. Tekhn. Fiz. **5**, 182 (1979) [Sov. Tech. Phys. Lett. **5**, 73 (1979)]
8. L. Pondrom, Proc. of the **1982 DPF Summer School on Elementary Particle Physics and Future Facilities**, p.98, eds. R. Donaldson, R. Gustafson, and F. Paige, Snowmass, CO (1982).
9. V. L. Lyuboshits, Yad. Fiz. **31**, 986 (1980) [Sov. J. Nucl. Phys. **31**, 509 (1980)].
10. I. J. Kim, Nucl. Phys. **B229**, 251 (1983)
11. We have observed channeling at crystal bends a factor of ten larger than used in this experiment. At twice the momentum used here these factors would imply effective magnetic fields of ≈ 1000 T.
12. J. Lach and L. Pondrom, Annu. Rev. Nucl. Part. Sci. **29**, 203 (1979). L. Pondrom, Phys. Rep. **122**, 57 (1985).
13. V. M. Samsonov, A. V. Khanzadeev, Preprint LNPI-1476, Leningrad (1989).
14. Dong Chen, Ph.D. Thesis, State University of New York at Albany, 1992 (unpublished).
15. M. Foucher et al., Phys. Rev. Lett. **68**, 3004 (1992)
16. J. Lindhard, Mat. Fys. Medd. Dan Vid. Selsk. **14**, 34 (1965)

17. A. N. Aleev et al., *Yad. Fiz.* **43**, 619 [1986], (*Sov. J. Nucl. Phys.* **43**, 395 (1986))

Table 1.

Σ^+ Polarization components as measured with the two crystals

	downbend crystal	upbend crystal
Px	-0.014 ± 0.054	0.038 ± 0.054
Py	0.085 ± 0.055	0.032 ± 0.049
Pz	0.106 ± 0.054	-0.100 ± 0.046

Figure Captions

- (a) Plan view of the incident proton beam and spectrometer system. The horizontal scale (z) correctly illustrates the length of the apparatus, the vertical scale (x) is schematic only.
 - (b) Elevation view of the channeling apparatus (not to scale). The arrows illustrate the spin precession in the crystals. Shaded areas depict the Σ^+ decay cone. The scintillation counters A and DF are part of the trigger and are described in the text.
- (a) Energy loss distribution for triggered events. The peak at lower energy loss values is due to channeled particles. The solid line through the non-channeled portion is a theoretical Landau distribution.
 - (b) The distribution of deflection angles for particles which satisfied the channeling energy loss requirement.
 - (c) Event distribution from both crystals of the mass squared of the missing neutral particle (X^0) for the hypothesis $\Sigma^+ \rightarrow pX^0$. Note the expected peak at the π^0 mass squared. Illustrated is a fit to a gaussian plus a second order polynomial.
- Measured polarizations and uncertainties (1σ statistical errors) after spins have been precessed by the two crystals. The dotted arrows show the expected precessions.

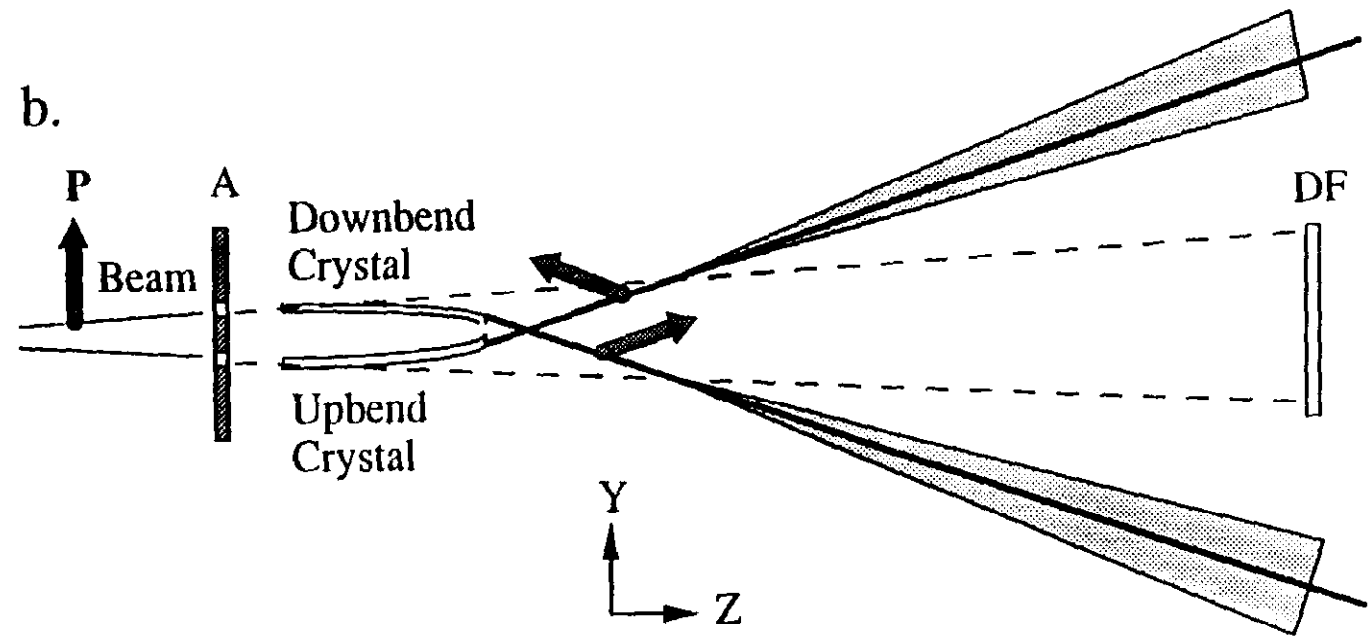
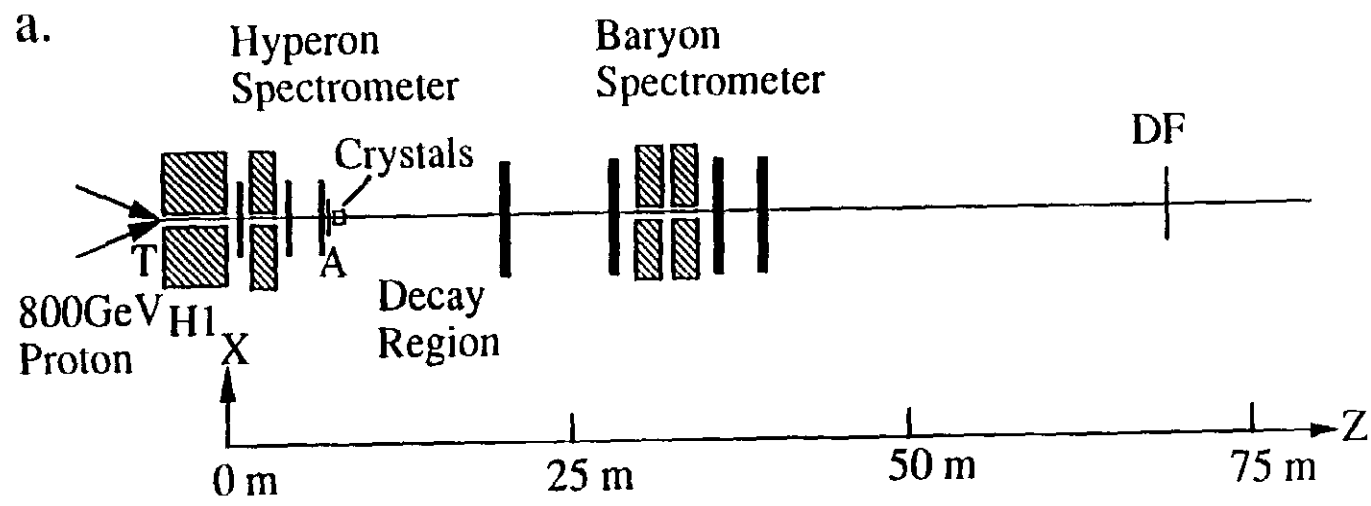


Figure 1

Figure 2

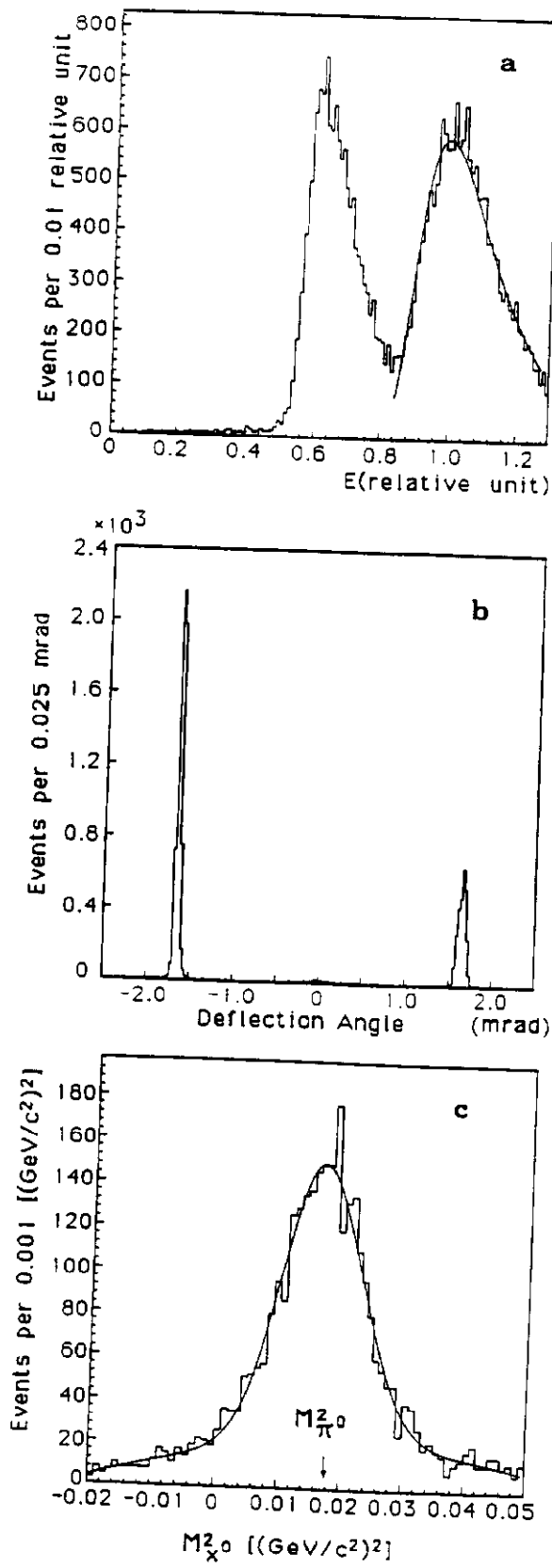


Figure 3

